

# Mulberry Nest

Ruiru East

4 Bedroom Maisonnettes



**TRV GROUP**  
OF COMPANIES

*Property Developers*

# Concept

The development comprises of 30 Terrace houses, each house being a 4 bedroom, with master bedroom being ensuite with balcony access.



The house is measuring approximately 1450 sq ft plinth area.

Allowance of 2 Car Parks per House.



## Highlights

- Back-up Generator
- Bio Digester
- Borehole
- Electric Fencing
- Cabro Paved Driveway
- Kids Play Area

The New Development is close proximity to:

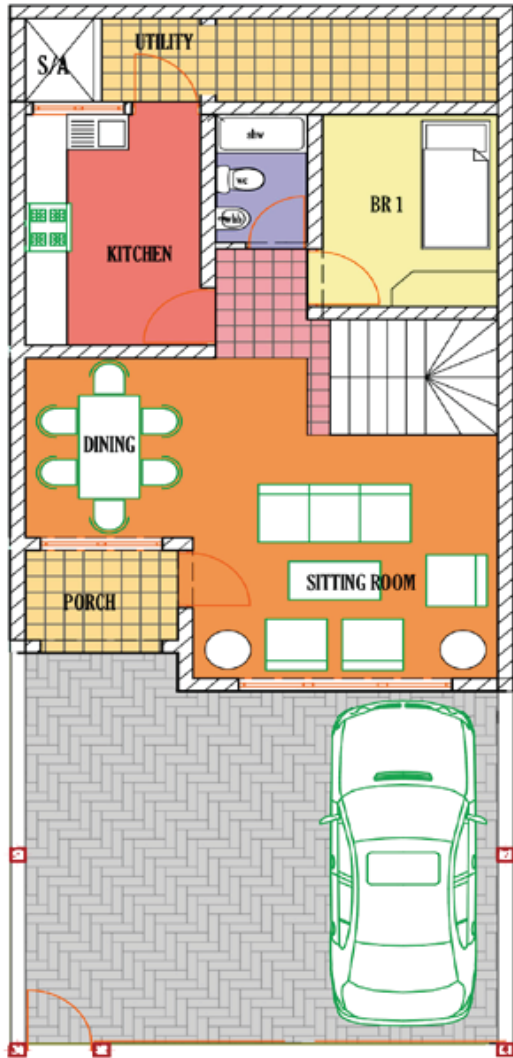
- Kenyatta University - JKUAT
- Ruiru Sports Clubs
- 1 Km from the Thika Super Highway



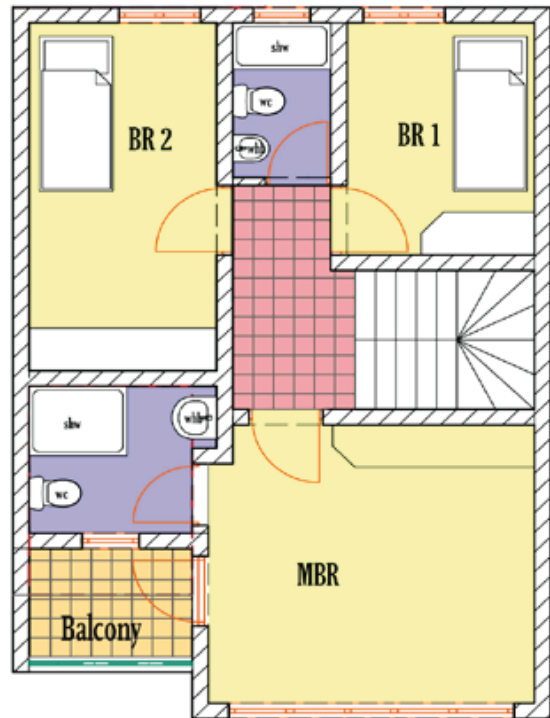


*The proximity is 15 minutes away from Thika and Nairobi.*

# Floor Plan



*Ruiru Maisonettes  
Typicaground Floor Plan*



*Ruiru Maisonettes  
Typical First Floor Plan*

Mortgage facility  
Available from



time for **more.**

and all other major Banks

Mortgage assistance  
can be provided

**Mortgage  
facility**

**Enquiries**

Call:

**+254 (0)717 911 119**

**+254 (0)732 911 119**

Or visit,

**Office address:  
58 Muthithi Road,  
TRV Office Plaza, 7th Floor  
P.O. Box 38040 - 00623  
Westlands, Nairobi**

Mobile: +254 (0)717 911 119

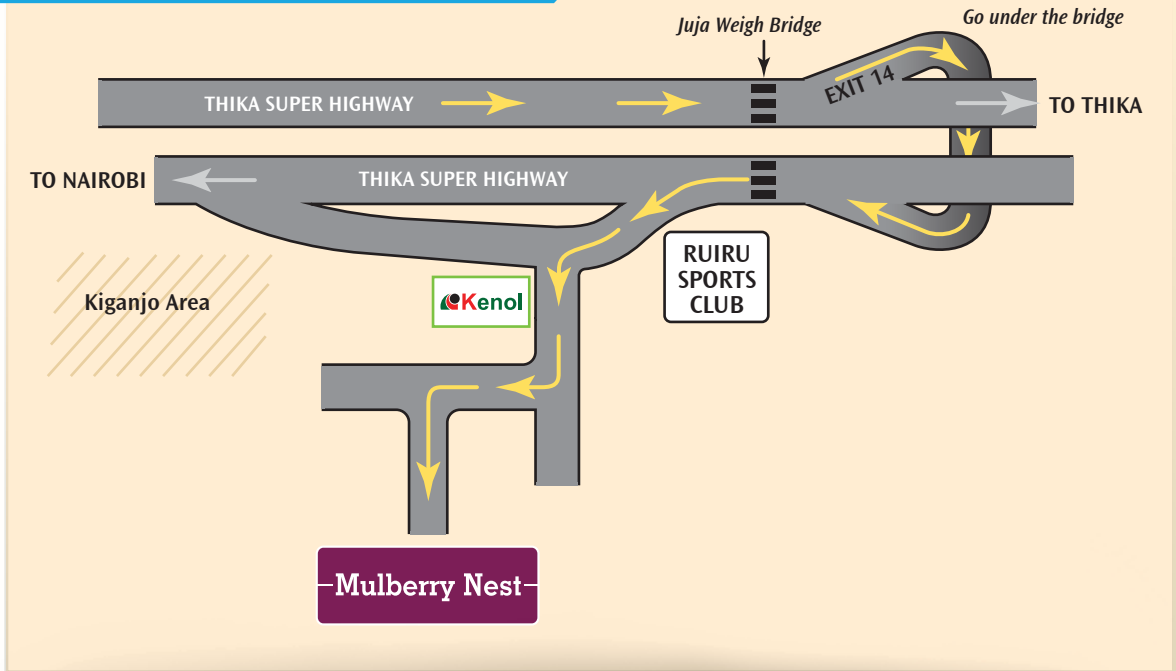
+254 (0)732 911 119

Email: [saleandmarketing@trvdevelopers.com](mailto:saleandmarketing@trvdevelopers.com)  
[www.trvgroup.co.ke](http://www.trvgroup.co.ke)

**Disclaimer**

The contents and information in this brochure are intended for general marketing purpose only and should not be relied upon by any person complete or accurate.

# Directional Map



## Enquiries:

Mobile: +254 (0)717 911 119, +254 (0)732 911 119

Email: [saleandmarketing@trvdevelopers.com](mailto:saleandmarketing@trvdevelopers.com)

Office address:

58 Muthithi Road, TRV Office Plaza, 7th Floor

P.O. Box 38040 - 00623

Westlands, Nairobi

[www.trvgroup.co.ke](http://www.trvgroup.co.ke)